

HARLOWE

THE START OF SOMETHING NEW

ADVANCED PREVIEW KIT



FLOORPLANS

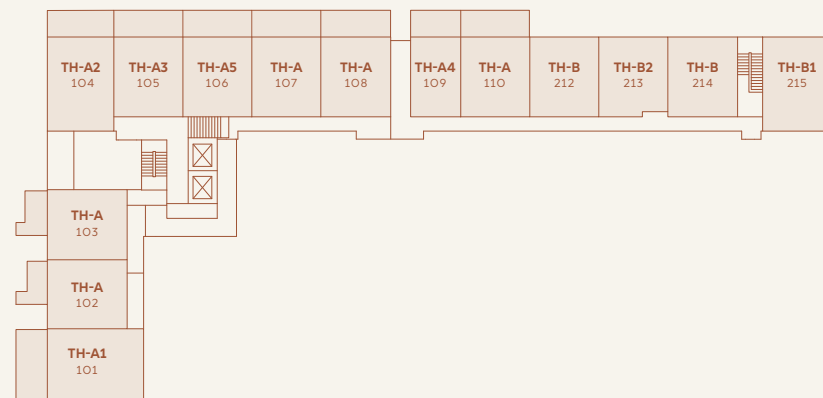
Site Plan

LOWER LEVEL

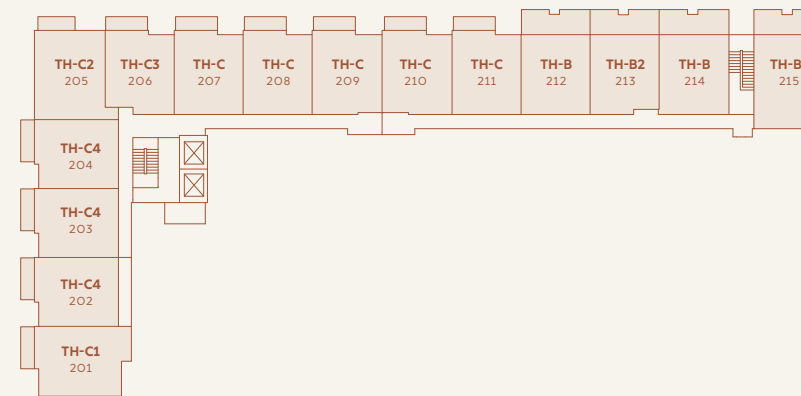
TH-A2 104	TH-A3 105	TH-A5 106	TH-A 107	TH-A 108	TH-A4 109	TH-A 110
--------------	--------------	--------------	-------------	-------------	--------------	-------------

TH-A 103
TH-A 102
TH-A1 101

LEVEL 1



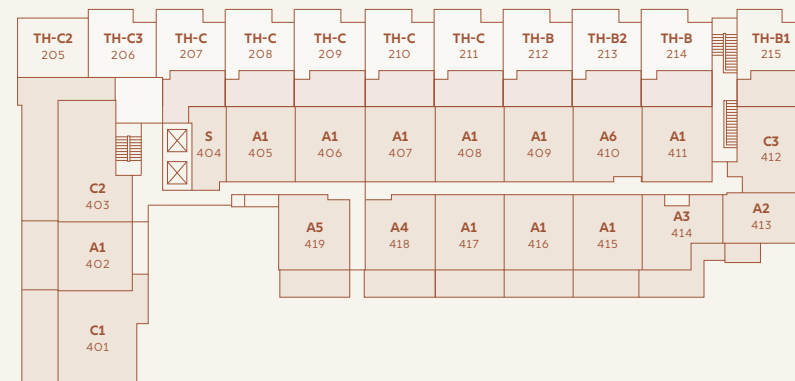
LEVEL 2



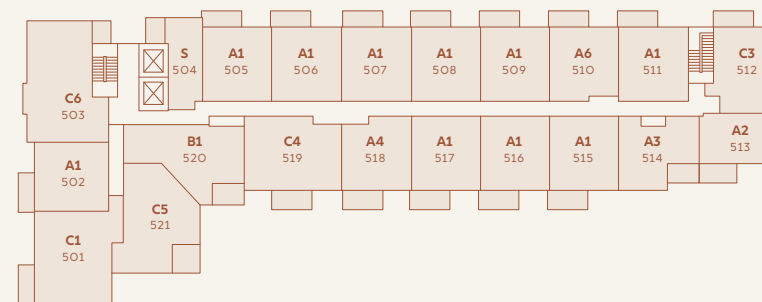
LEVEL 3



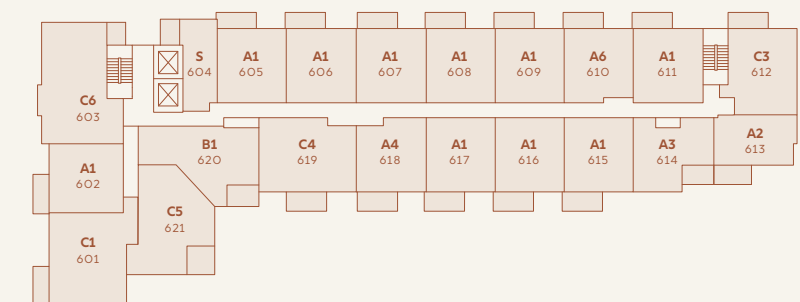
LEVEL 4



LEVEL 5



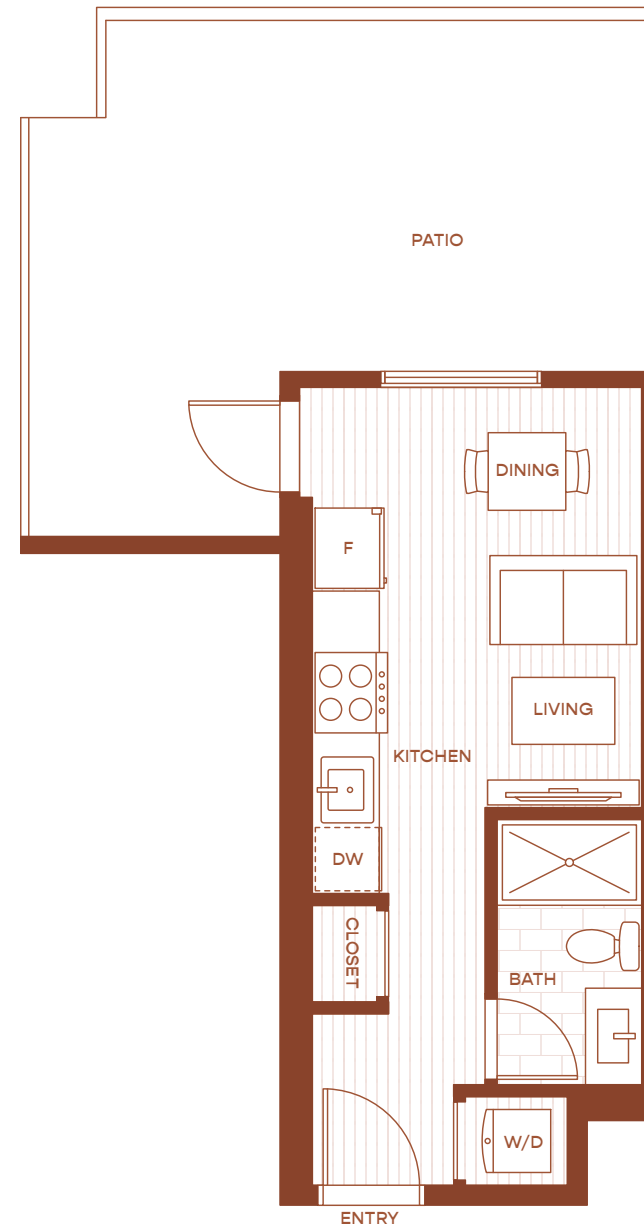
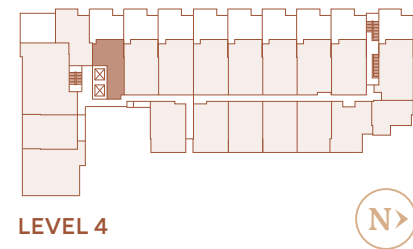
LEVEL 6



S

STUDIO, 1 BATH

INTERIOR: 283 SQ FT | EXTERIOR: 245 SQ FT | TOTAL: 528 SQ FT



HARLOWE

 GENARIS

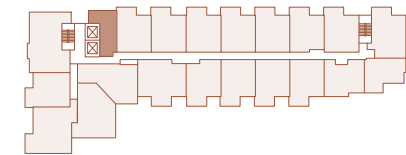
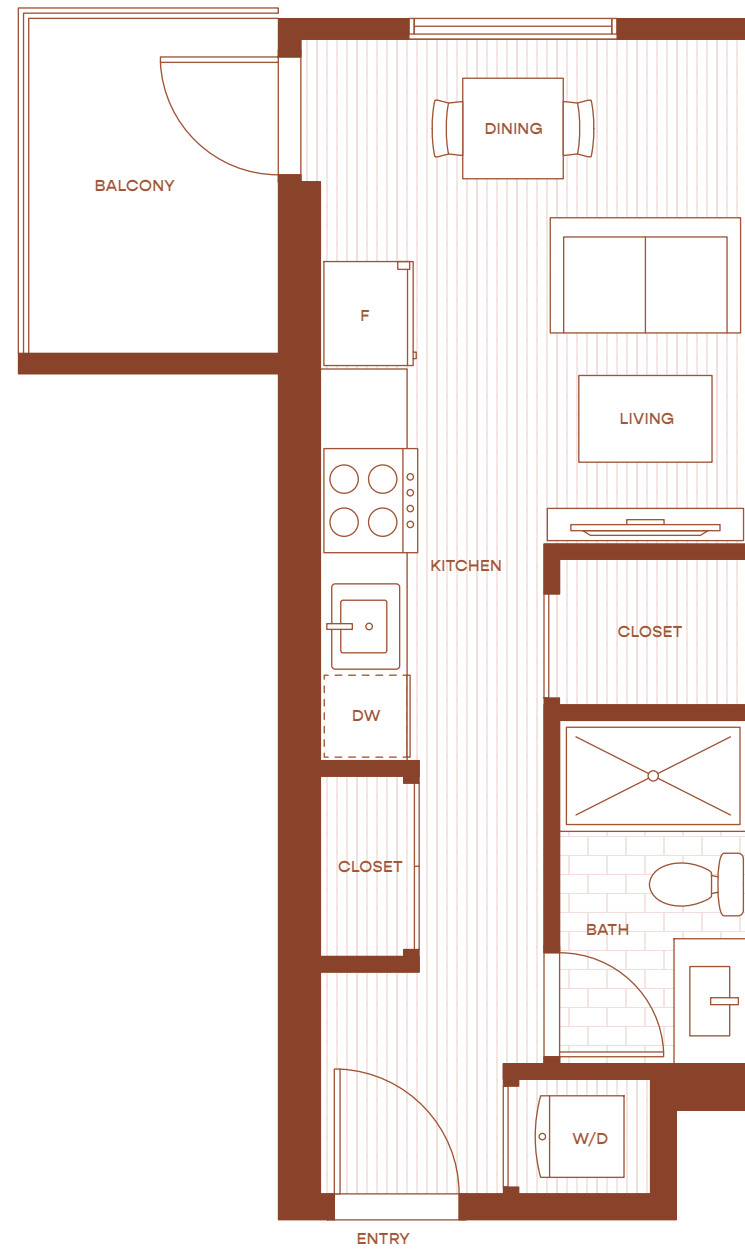
 MLA
CANADA

The developer reserves the right to make changes, modifications or substitutes to the building design, specifications and floorplans should they be necessary. Renderings, views, and layouts are for illustration purposes only. This is not an offering for sale and such an offering can only be made after filing a disclosure statement. E.&O.E. Sales powered by MLA Canada Realty. Genaris Properties Inc. (Atoq Capital (Harlowe) G.P. LTD.)

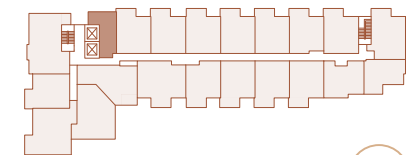
S1

STUDIO, 1 BATH

INTERIOR: 316 SQ FT | EXTERIOR: 53 SQ FT | TOTAL: 364 SQ FT



LEVEL 6



LEVEL 5



HARLOWE

 GENARIS

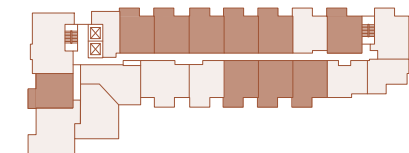
 MLA
CANADA

The developer reserves the right to make changes, modifications or substitutes to the building design, specifications and floorplans should they be necessary. Renderings, views, and layouts are for illustration purposes only. This is not an offering for sale and such an offering can only be made after filing a disclosure statement. E.&O.E. Sales powered by MLA Canada Realty. Genaris Properties Inc. (Atoq Capital (Harlowe) G.P. LTD.)

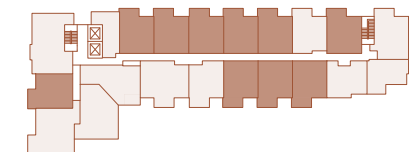
A1

1 BEDROOM, 1 BATH

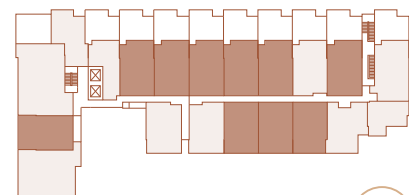
INTERIOR: 492 SQ FT | EXTERIOR: 60-227 SQ FT | TOTAL: 552-719 SQ FT



LEVEL 6



LEVEL 5



LEVEL 4



HARLOWE

 GENARIS

 MLA
CANADA

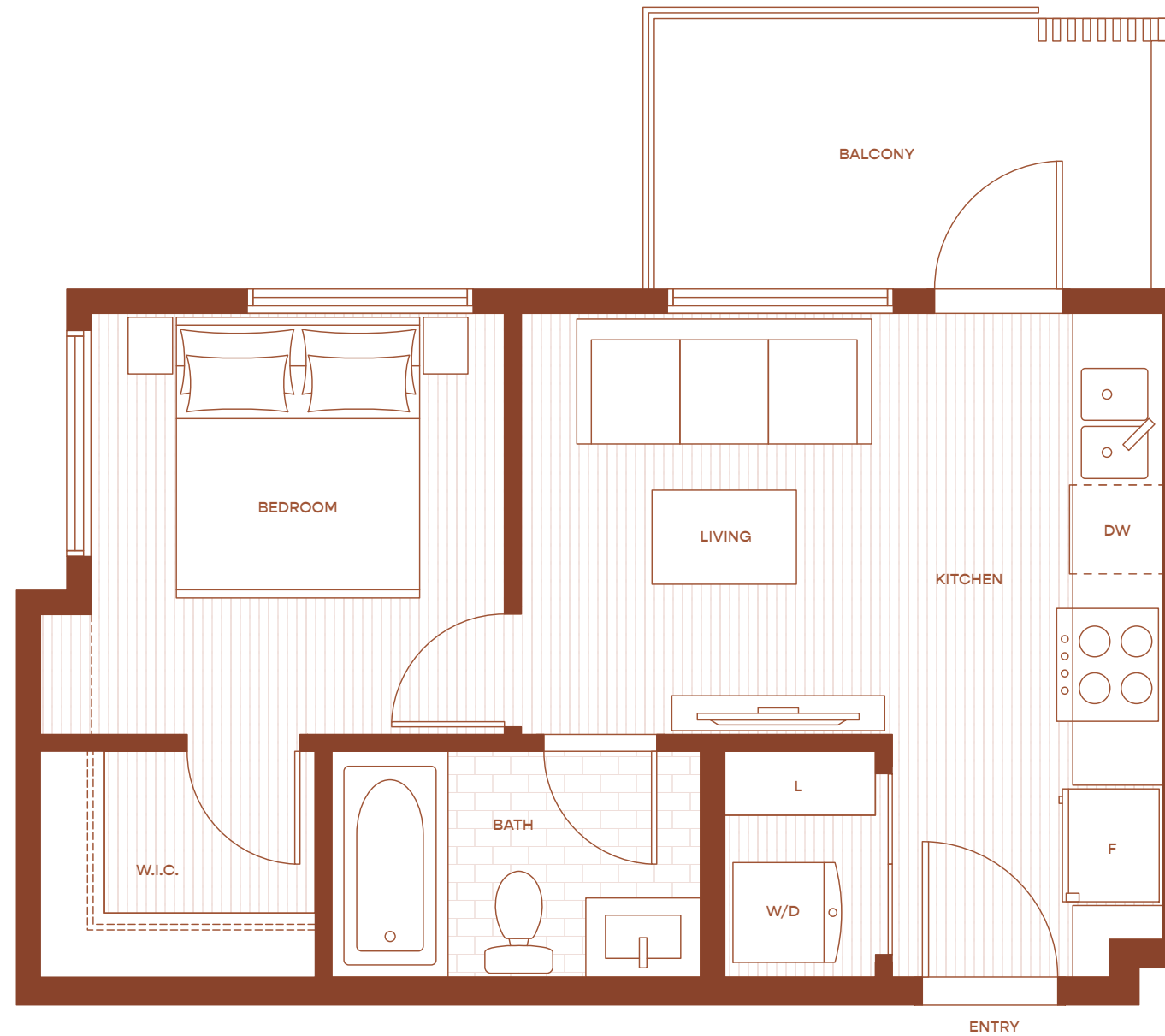
UNIT TYPE - 1B

The developer reserves the right to make changes, modifications or substitutes to the building design, specifications and floorplans should they be necessary. Renderings, views, and layouts are for illustration purposes only. This is not an offering for sale and such an offering can only be made after filing a disclosure statement. E.&O.E. Sales powered by MLA Canada Realty. Genaris Properties Inc. (Atoq Capital (Harlowe) G.P. LTD.)

A2

1 BEDROOM, 1 BATH

INTERIOR: 392 SQ FT | EXTERIOR: 67-72 SQ FT | TOTAL: 459-464 SQ FT



HARLOWE

UNIT TYPE - 1B1

GENARIS

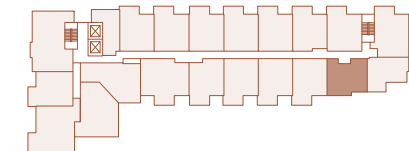
MLA
CANADA

The developer reserves the right to make changes, modifications or substitutes to the building design, specifications and floorplans should they be necessary. Renderings, views, and layouts are for illustration purposes only. This is not an offering for sale and such an offering can only be made after filing a disclosure statement. E.&O.E. Sales powered by MLA Canada Realty. Genaris Properties Inc. (Atoq Capital (Harlowe) G.P. LTD.)

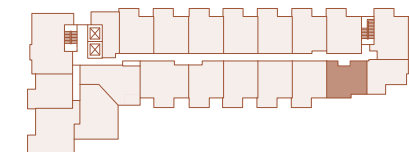
A3

1 BEDROOM, 1 BATH

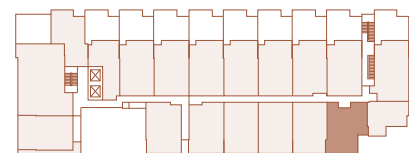
INTERIOR: 470 SQ FT | EXTERIOR: 62-239 SQ FT | TOTAL: 532-709 SQ FT



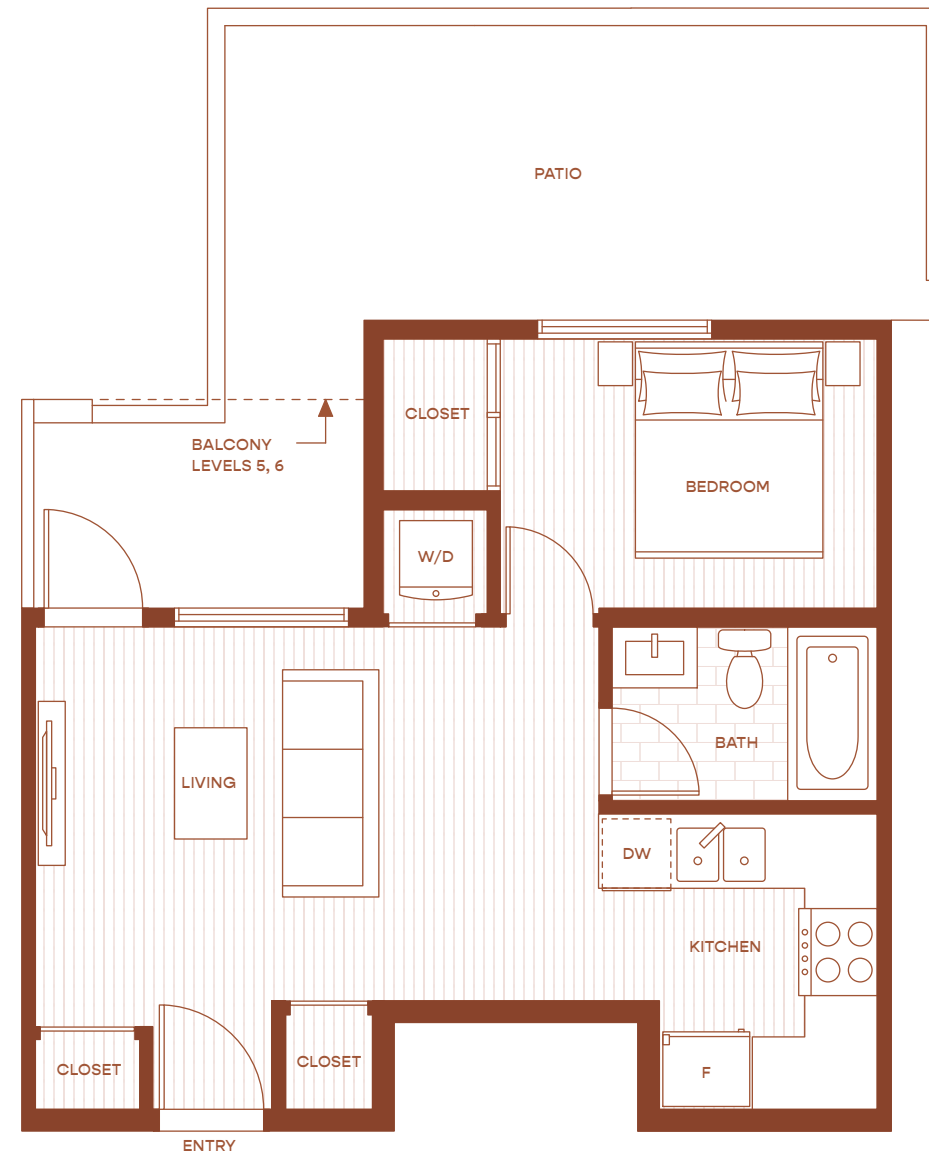
LEVEL 6



LEVEL 5



LEVEL 4



HARLOWE

 GENARIS

 MLA
CANADA

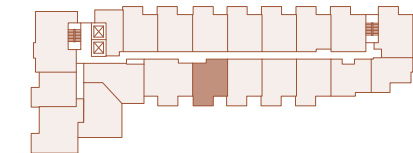
UNIT TYPE - 1B2

The developer reserves the right to make changes, modifications or substitutes to the building design, specifications and floorplans should they be necessary. Renderings, views, and layouts are for illustration purposes only. This is not an offering for sale and such an offering can only be made after filing a disclosure statement. E.&O.E. Sales powered by MLA Canada Realty. Genaris Properties Inc. (Atoq Capital (Harlowe) G.P. LTD.)

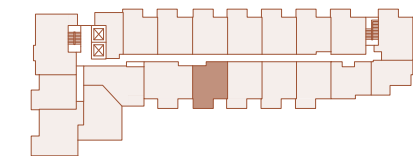
A4

1 BEDROOM, 1 BATH

INTERIOR: 472-480 SQ FT | EXTERIOR: 72-83 SQ FT | TOTAL: 549-563 SQ FT



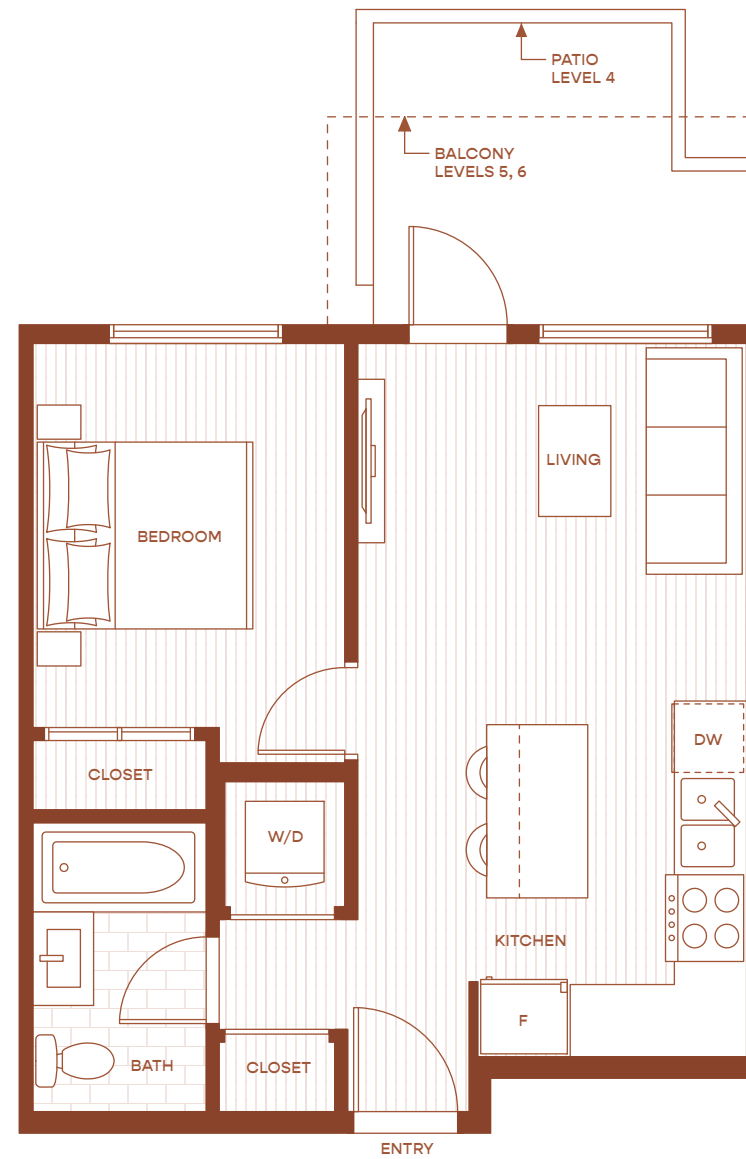
LEVEL 6



LEVEL 5



LEVEL 4



UNIT TYPE - 1B3, 1B3.1

HARLOWE

 GENARIS

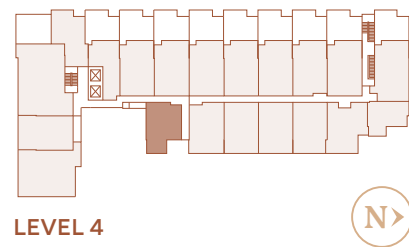
 MLA
CANADA

The developer reserves the right to make changes, modifications or substitutes to the building design, specifications and floorplans should they be necessary. Renderings, views, and layouts are for illustration purposes only. This is not an offering for sale and such an offering can only be made after filing a disclosure statement. E.&O.E. Sales powered by MLA Canada Realty. Genaris Properties Inc. (Atoq Capital (Harlowe) G.P. LTD.)

A5

1 BEDROOM, 1 BATH

INTERIOR: 489 SQ FT | EXTERIOR: 108 SQ FT | TOTAL: 597 SQ FT



HARLOWE

UNIT TYPE - 1B4

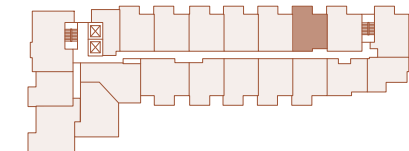


The developer reserves the right to make changes, modifications or substitutes to the building design, specifications and floorplans should they be necessary. Renderings, views, and layouts are for illustration purposes only. This is not an offering for sale and such an offering can only be made after filing a disclosure statement. E.&O.E. Sales powered by MLA Canada Realty. Genaris Properties Inc. (Atoq Capital (Harlowe) G.P. LTD.)

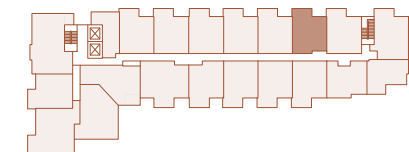
A6

1 BEDROOM, 1 BATH

INTERIOR: 472 SQ FT | EXTERIOR: 60-221 SQ FT | TOTAL: 532-693 SQ FT



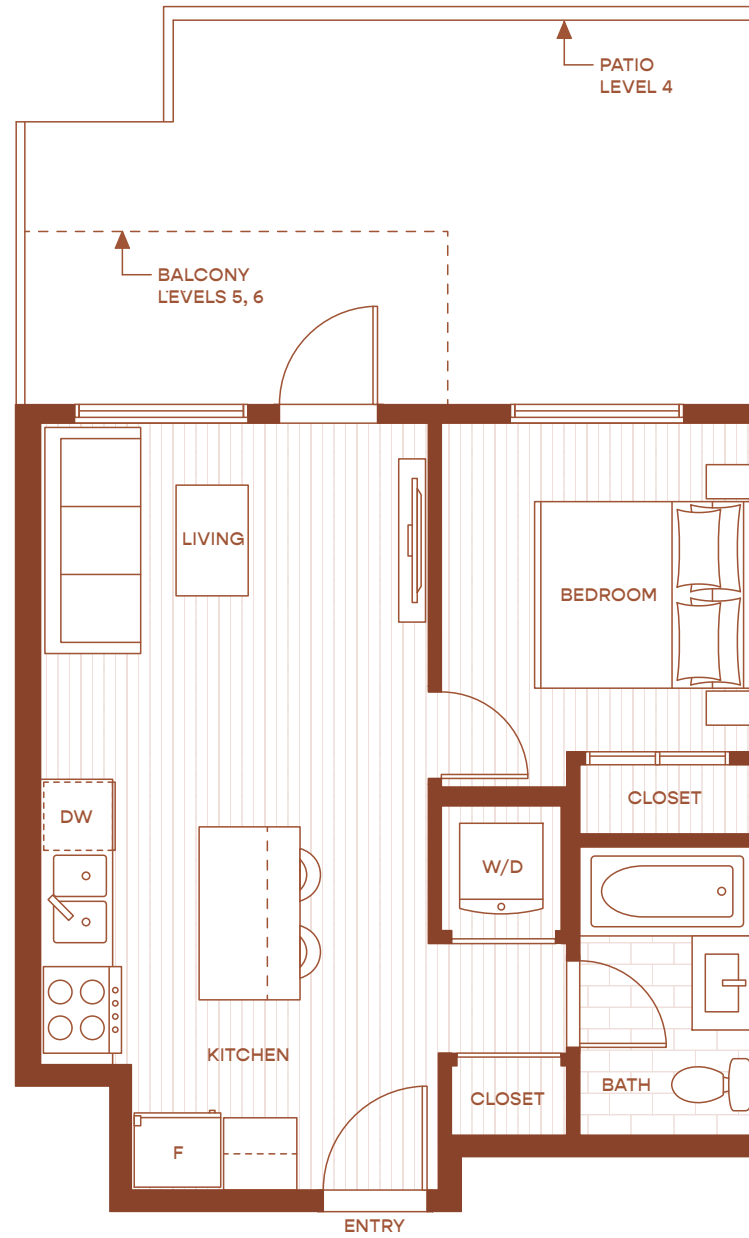
LEVEL 6



LEVEL 5



LEVEL 4



HARLOWE

UNIT TYPE - 1B5

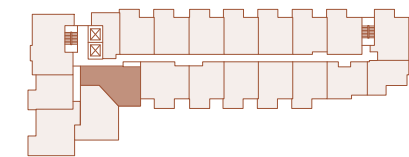


The developer reserves the right to make changes, modifications or substitutes to the building design, specifications and floorplans should they be necessary. Renderings, views, and layouts are for illustration purposes only. This is not an offering for sale and such an offering can only be made after filing a disclosure statement. E.&O.E. Sales powered by MLA Canada Realty. Genaris Properties Inc. (Atoq Capital (Harlowe) G.P. LTD.)

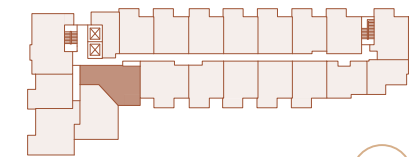
B1

JR 2 BEDROOM, 1 BATH

INTERIOR: 632 SQ FT | EXTERIOR: 67-68 SQ FT | TOTAL: 699-700 SQ FT



LEVEL 6



LEVEL 5



HARLOWE

UNIT TYPE - 1B+DEN

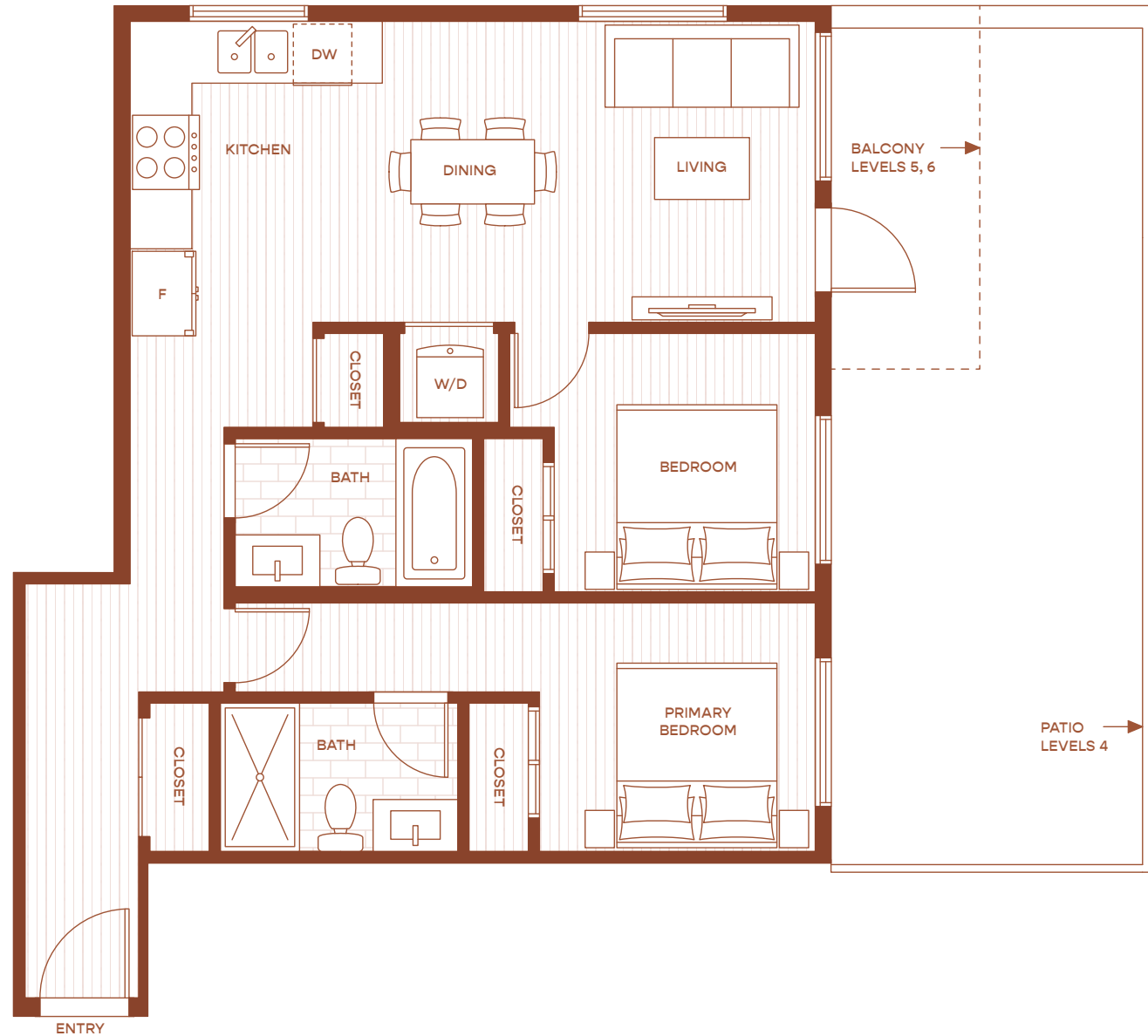


The developer reserves the right to make changes, modifications or substitutes to the building design, specifications and floorplans should they be necessary. Renderings, views, and layouts are for illustration purposes only. This is not an offering for sale and such an offering can only be made after filing a disclosure statement. E.&O.E. Sales powered by MLA Canada Realty. Genaris Properties Inc. (Atoq Capital (Harlowe) G.P. LTD.)

C1

2 BEDROOM, 2 BATH

INTERIOR: 748-753 SQ FT | EXTERIOR: 61-296 SQ FT | TOTAL: 809-1,049 SQ FT



HARLOWE

UNIT TYPE - 2B

 GENARIS

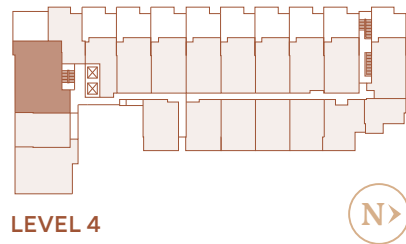
 MLA
CANADA

The developer reserves the right to make changes, modifications or substitutes to the building design, specifications and floorplans should they be necessary. Renderings, views, and layouts are for illustration purposes only. This is not an offering for sale and such an offering can only be made after filing a disclosure statement. E.&O.E. Sales powered by MLA Canada Realty. Genaris Properties Inc. (Atoq Capital (Harlowe) G.P. LTD.)

C2

2 BEDROOM, 2 BATH

INTERIOR: 734 SQ FT | EXTERIOR: 602 SQ FT | TOTAL: 1,336 SQ FT



LEVEL 4



HARLOWE

UNIT TYPE - 2B1

 GENARIS

 MLA
CANADA

The developer reserves the right to make changes, modifications or substitutes to the building design, specifications and floorplans should they be necessary. Renderings, views, and layouts are for illustration purposes only. This is not an offering for sale and such an offering can only be made after filing a disclosure statement. E.&O.E. Sales powered by MLA Canada Realty. Genaris Properties Inc. (Atoq Capital (Harlowe) G.P. LTD.)

C3

2 BEDROOM, 1 BATH

INTERIOR: 555 SQ FT | EXTERIOR: 62-207 SQ FT | TOTAL: 617-774 SQ FT



HARLOWE

UNIT TYPE - 2B2

 GENARIS

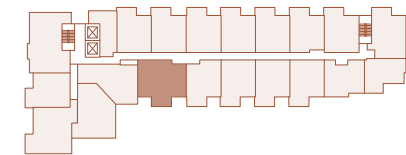
 MLA
CANADA

The developer reserves the right to make changes, modifications or substitutes to the building design, specifications and floorplans should they be necessary. Renderings, views, and layouts are for illustration purposes only. This is not an offering for sale and such an offering can only be made after filing a disclosure statement. E.&O.E. Sales powered by MLA Canada Realty. Genaris Properties Inc. (Atoq Capital (Harlowe) G.P. LTD.)

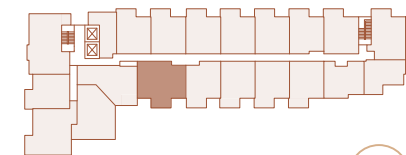
C4

2 BEDROOM, 2 BATH

INTERIOR: 667 SQ FT | EXTERIOR: 72-74 SQ FT | TOTAL: 739-741 SQ FT



LEVEL 6



LEVEL 5



HARLOWE

UNIT TYPE - 2B3

 GENARIS

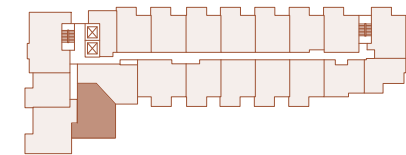
 MLA
CANADA

The developer reserves the right to make changes, modifications or substitutes to the building design, specifications and floorplans should they be necessary. Renderings, views, and layouts are for illustration purposes only. This is not an offering for sale and such an offering can only be made after filing a disclosure statement. E.&O.E. Sales powered by MLA Canada Realty. Genaris Properties Inc. (Atoq Capital (Harlowe) G.P. LTD.)

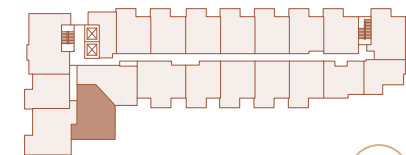
C5

2 BEDROOM, 2 BATH

INTERIOR: 687 SQ FT | EXTERIOR: 76 SQ FT | TOTAL: 763 SQ FT



LEVEL 6



LEVEL 5



HARLOWE

UNIT TYPE - 2B4

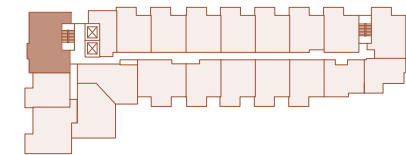
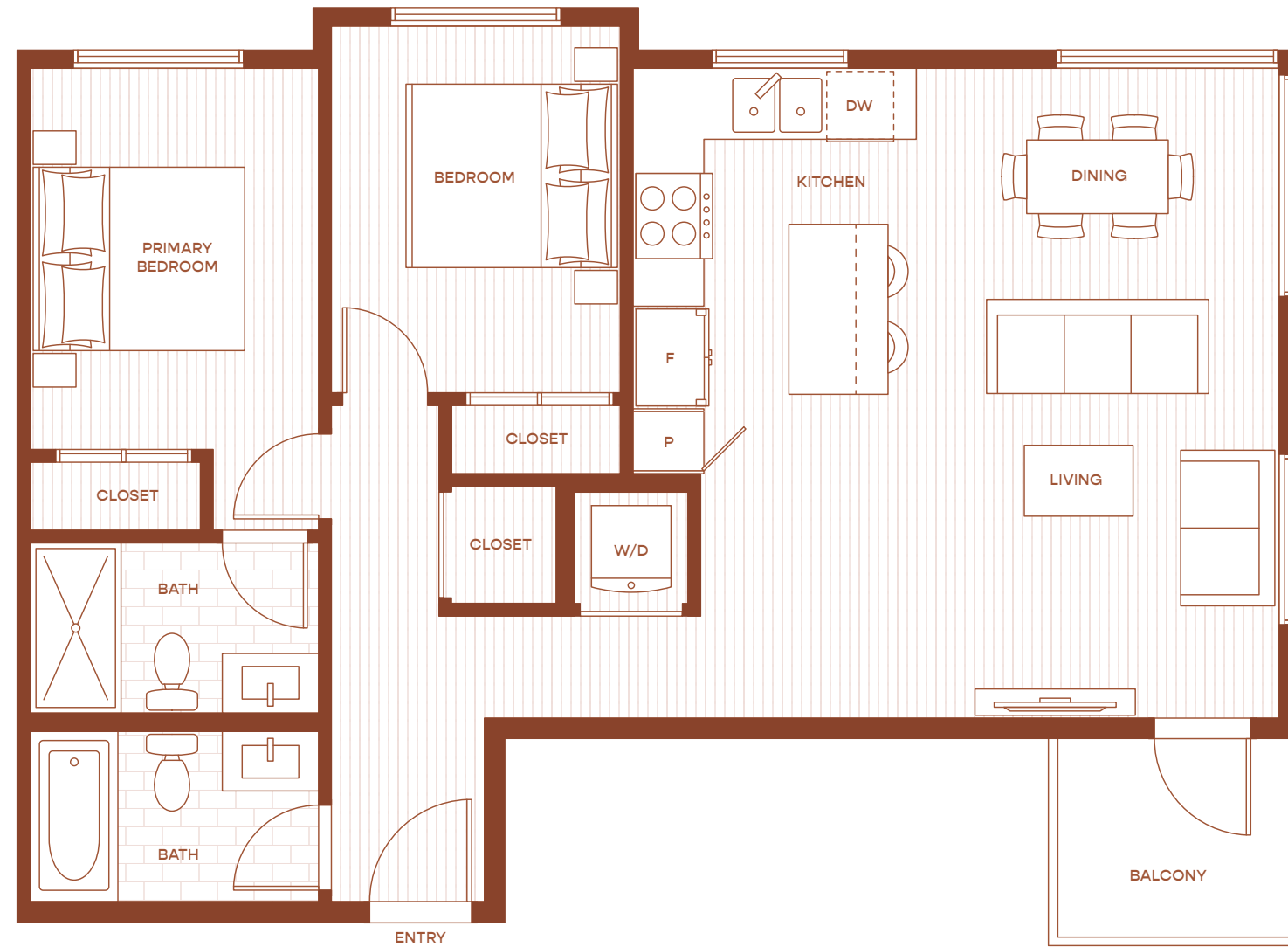


The developer reserves the right to make changes, modifications or substitutes to the building design, specifications and floorplans should they be necessary. Renderings, views, and layouts are for illustration purposes only. This is not an offering for sale and such an offering can only be made after filing a disclosure statement. E.&O.E. Sales powered by MLA Canada Realty. Genaris Properties Inc. (Atoq Capital (Harlowe) G.P. LTD.)

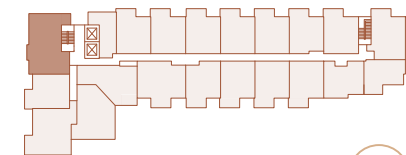
C6

2 BEDROOM, 2 BATH

INTERIOR: 833 SQ FT | EXTERIOR: 42-43 SQ FT | TOTAL: 875-876 SQ FT



LEVEL 6



LEVEL 5



HARLOWE

UNIT TYPE - 2B5

GENARIS

MLA
CANADA

The developer reserves the right to make changes, modifications or substitutes to the building design, specifications and floorplans should they be necessary. Renderings, views, and layouts are for illustration purposes only. This is not an offering for sale and such an offering can only be made after filing a disclosure statement. E.&O.E. Sales powered by MLA Canada Realty. Genaris Properties Inc. (Atoq Capital (Harlowe) G.P. LTD.)



HarloweLiving.ca
604-356-0242

The developer reserves the right to make changes, modifications or substitutes to the building design, specifications and floorplans should they be necessary. Renderings, views, and layouts are for illustration purposes only. This is not an offering for sale and such an offering can only be made after filing a disclosure statement. Sales powered by MLA Canada Realty. E.&O.E. Genaris Properties Inc. (ATOQ CAPITAL (HARLOWE) G.P. LTD.)

